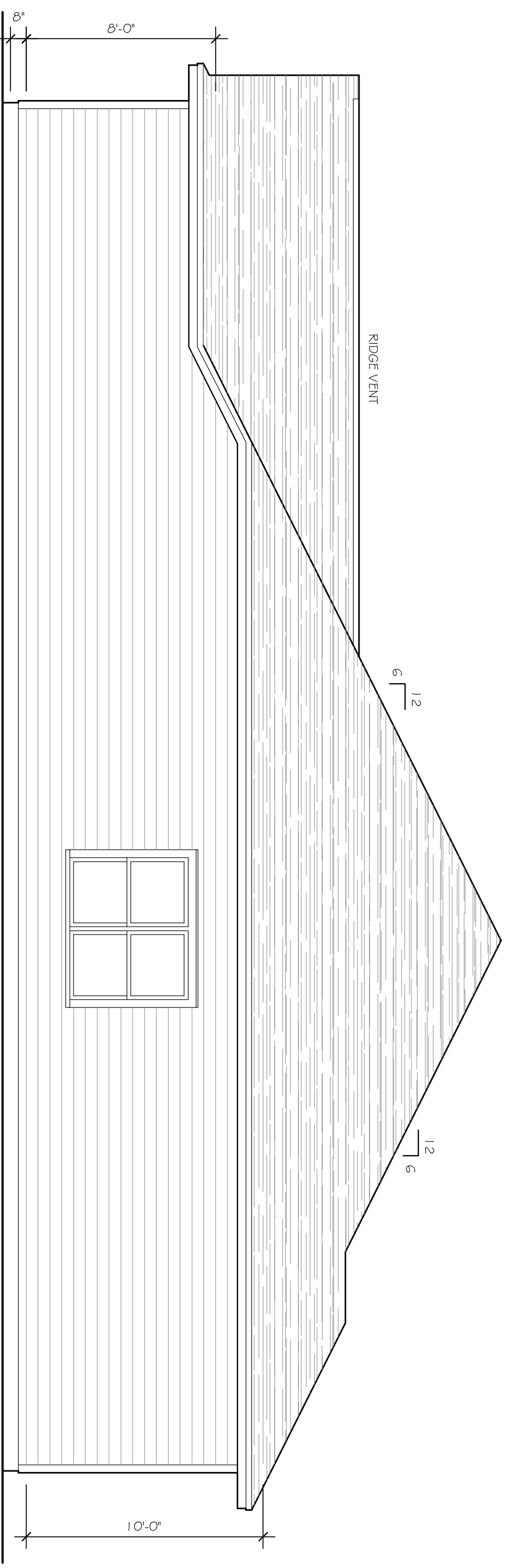
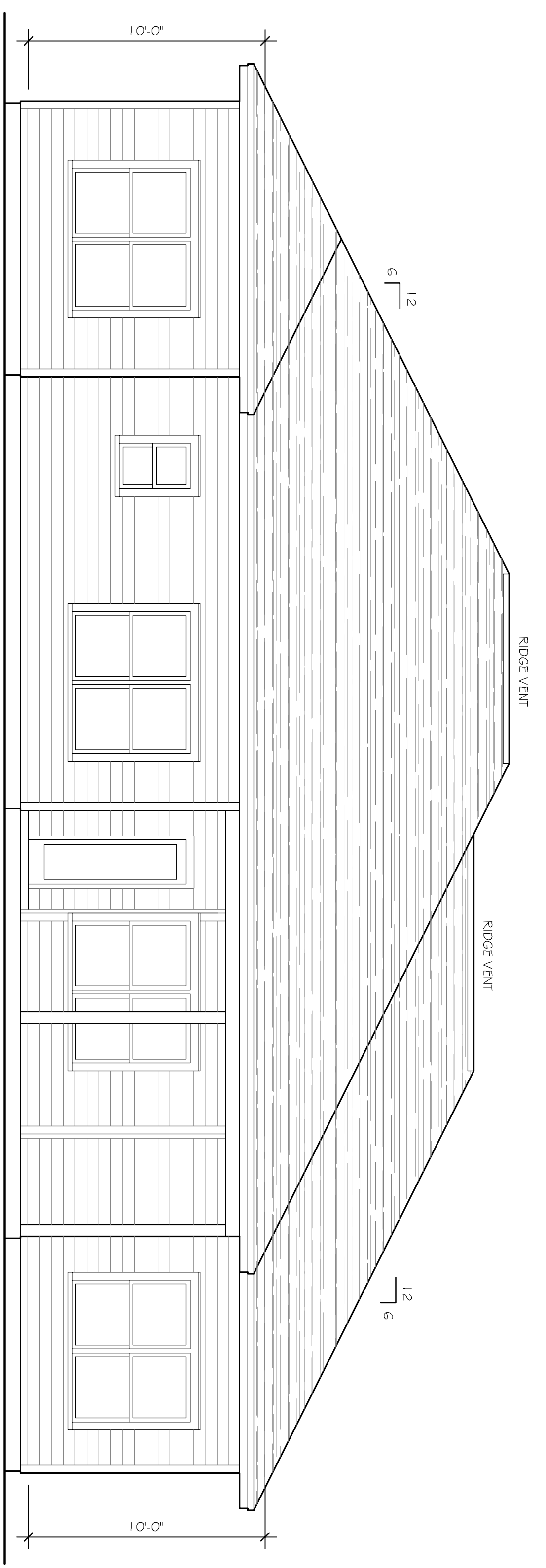


NOTE: This drawing, as an instrument of service, is the property of John R. Barrow, and shall not be reproduced, published or used in any way without the written consent of John R. Barrow.
Contractor shall verify all dimensions before starting construction.



4 EAST ELEVATION
1/4" = 1'-0"



3 NORTH ELEVATION
1/4" = 1'-0"

All construction shall comply with the Florida Building Code (Edition 5), National Electrical Code (2014), NFPA 101 Life Safety Code w/ Florida Modifications, and Florida Fire Prevention Code.