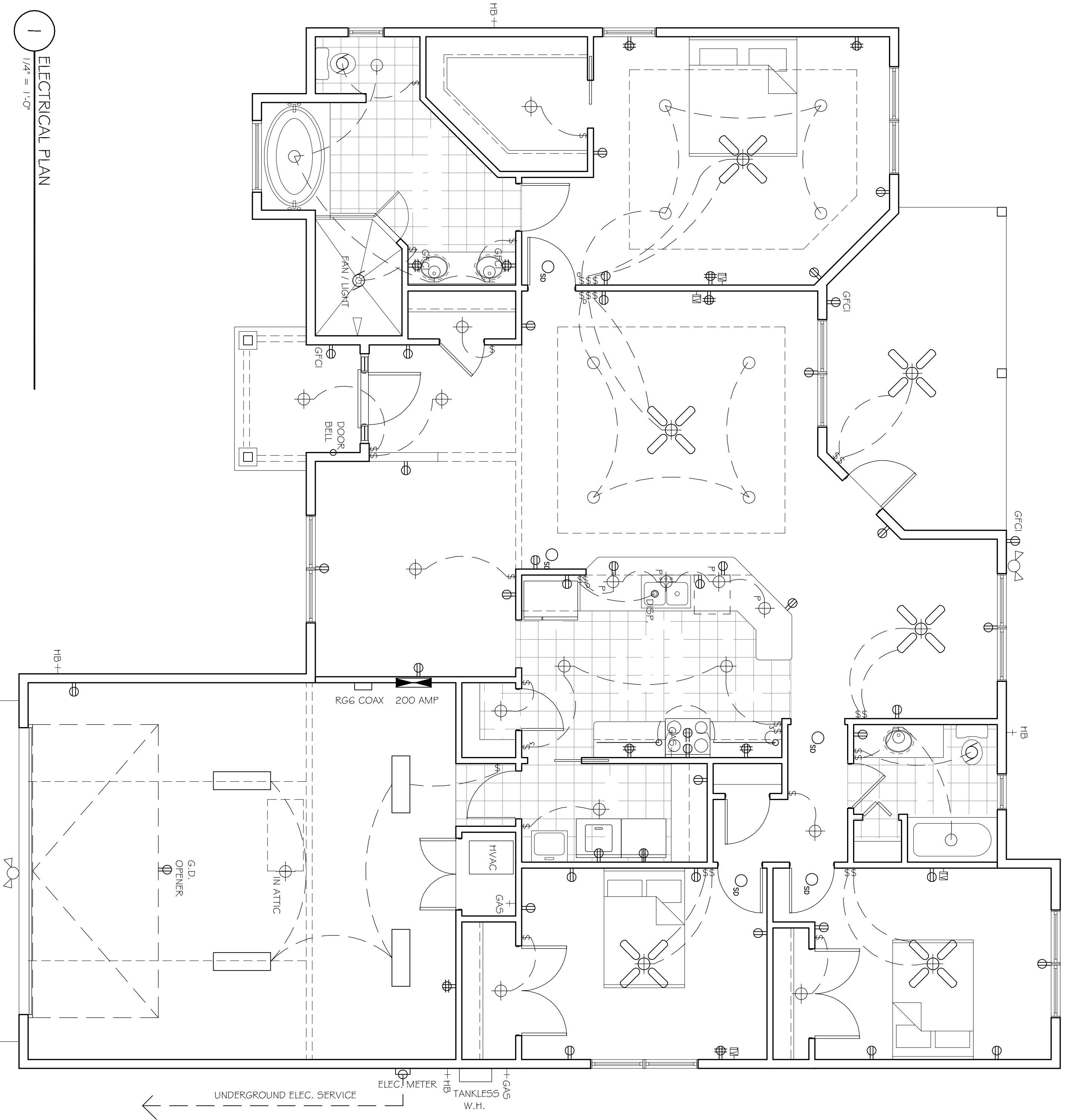


ELECTRICAL LEGEND	
⊕	110V DUPLEX RECFP.
⊕	DOUBLE 110V DUP. RECFP.
⊕	220V RECFP.
⬤	ELECTRICAL PANEL
⊗	CEILING FAN
○	WALL LIGHT
○	RECESSED CAN. LIGHT
⊕	CEILING LIGHT
⊕	PENDANT LIGHT
⊕	EXHAUST FAN
—	UNDER CABINET STRIPS
○	4' OR 8' DBL. FLOOR.
○ <sub>SD</sub>	SMOKE / CO DETECTOR
▲	PHONE JACK
▣	CABLE / CAT5E
\$	SWITCH
\$	DIMMER SWITCH
\$	3 WAY SWITCH
⊕	SECURITY LIGHTS
□	JUNCTION BOX



1 ELECTRICAL PLAN  
1/4" = 1'-0"

All construction shall comply with the Florida Building Code (Edition 5), National Electrical Code (2014), NFPA 101 Life Safety Code w/ Florida Modifications, and Florida Fire Prevention Code.

NOTICE: This drawing, as an instrument of service, and all information contained hereon, shall remain the property of John Barrow, and shall not be reproduced, published or otherwise disseminated without the permission of John Barrow.  
Contractor shall verify all dimensions before starting construction.

DESIGN AND DRAFTING:  
JOHN R. BARROW  
503 SW 23RD PLACE  
GAINESVILLE, FL 32601  
(352) 317-8282

DATE:  
REVISION:

NEW RESIDENCE  
FOR KEVIN BROWN

SHEET  
8  
OF 8